



**VSK\***  
**SHUTTLE VALVE**  
**SERIES 10**

**CARTRIDGE TYPE**

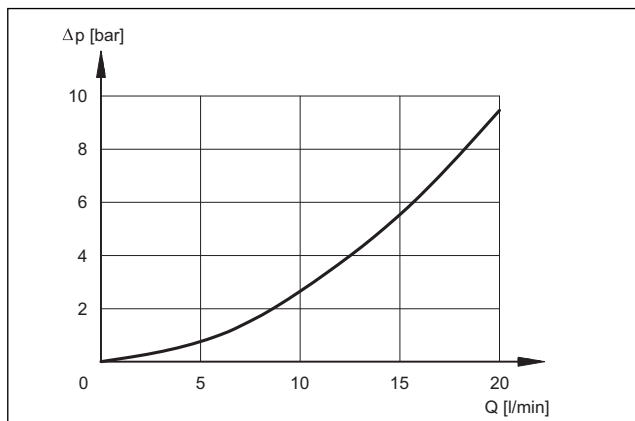
**p** max **350** bar

**Q** max (see table of performances)

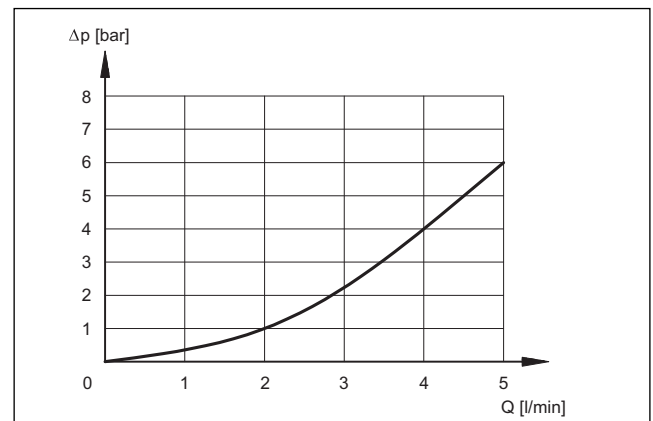
**OPERATING PRINCIPLE**

- The VSK\* valves are shuttle type, cartridge version and it can be used in panels and blocks.
- The valve select the higher pressure signal between “1” and “3” through the output port “2”
- The VSK1 reaches flows up to 20 l/min.
- The VSK2 is a shuttle valve for pilot signals up to a 3 l/min flows.

**VSK1 PRESSURE DROPS  $\Delta p$ -Q**



**VSK2 PRESSURE DROPS  $\Delta p$ -Q**

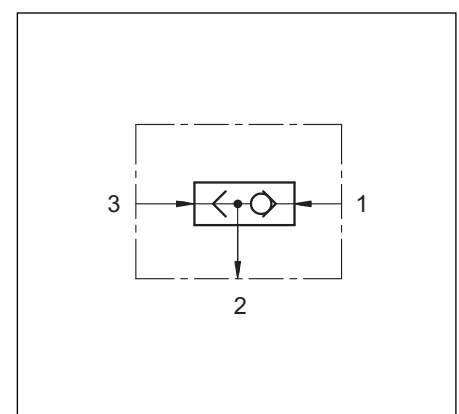


**PERFORMANCES**

valve	max flow [l/min]	mass [kg]
<b>VSK1</b>	20	0,013
<b>VSK2</b>	3	0,013

Ambient temperature range	°C	-20 / +60
Fluid temperature range	°C	-20 / +80
Fluid viscosity range	cSt	10 ÷ 400
Fluid contamination degree	According to ISO 4406:1999 class 20/18/15	
Recommended viscosity	cSt	25

**HYDRAULIC SYMBOL**



**1 - IDENTIFICATION CODE**

	V S K / 10		
Shuttle valve _____		Seals:	
Cartridge type _____		<b>N</b> = for mineral oils ( <b>standard</b> )	
		<b>V</b> = viton for special fluids	
Nominal size: _____		Series No.: (the overall and mounting	
<b>1</b> = shuttle for flows up to 20 l/min		dimensions remain unchanged from 10 to 19)	
<b>2</b> = shuttle for piloting signals up to 3 l/min			

**2 - HYDRAULIC FLUIDS**

Use mineral oil-based hydraulic fluids HL or HM type, according to ISO 6743-4. For these fluids, use NBR seals (code N). For fluids HFDR type (phosphate esters) use FPM seals (code V). For the use of other kinds of fluid such as HFA, HFB, HFC, please consult our technical department. Using fluids at temperatures higher than 80 °C causes a faster degradation of the fluid and of the seals characteristics. The fluid must be preserved in its physical and chemical characteristics.

**3 - OVERALL AND MOUNTING DIMENSIONS**

**VSK1**

**VSK2**

dimensions in mm

1	Parbak 8-011 (8.36x1.14x1.35)
2	OR type 2031 (7.66x1.78)
3	OR type 2025 (6.07x1.78)
4	Parbak 8-010 (6.78x1.14x1.35)
5	N. 5 OR type 2037 (9.25x1.78)